

Transportation Update

Craig Thompson

Secretary, Wisconsin Department of Transportation

Wisconsin Asphalt Pavement Association

Annual Conference

November 29, 2022

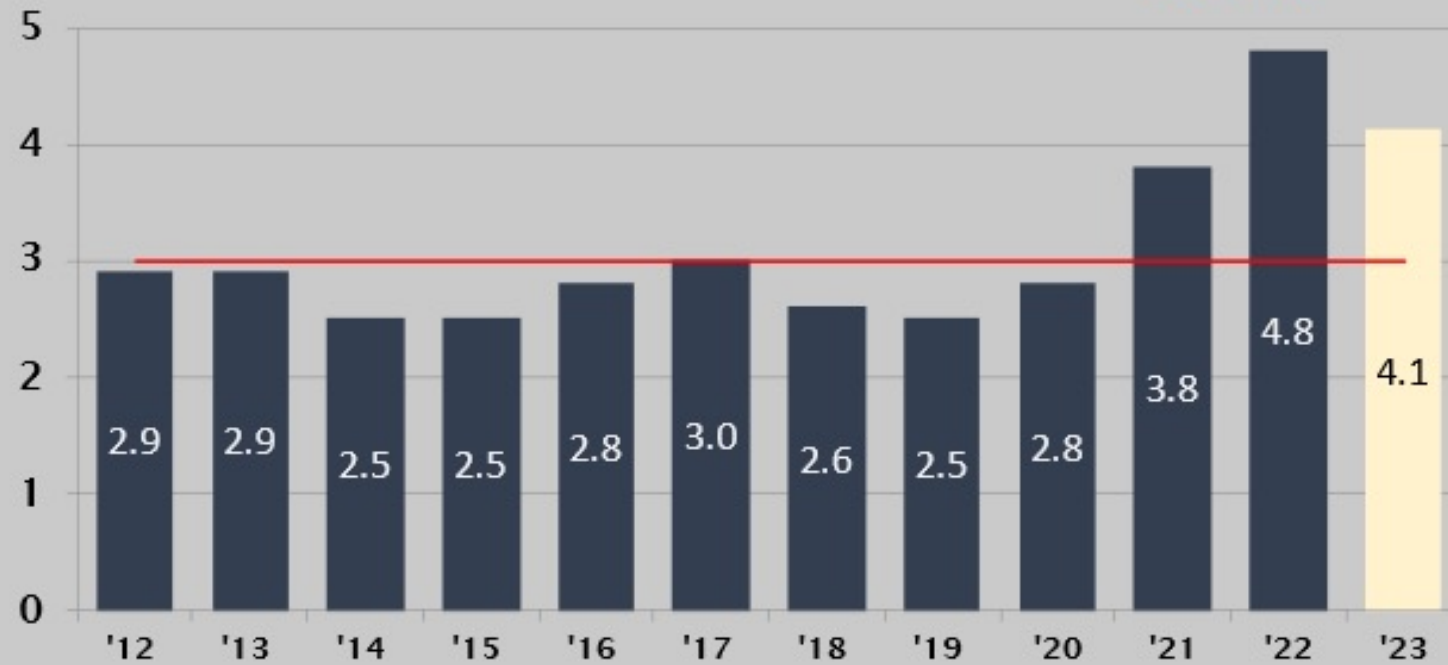


Estimated Asphalt Quantities For FY 23

Millions Of Tons

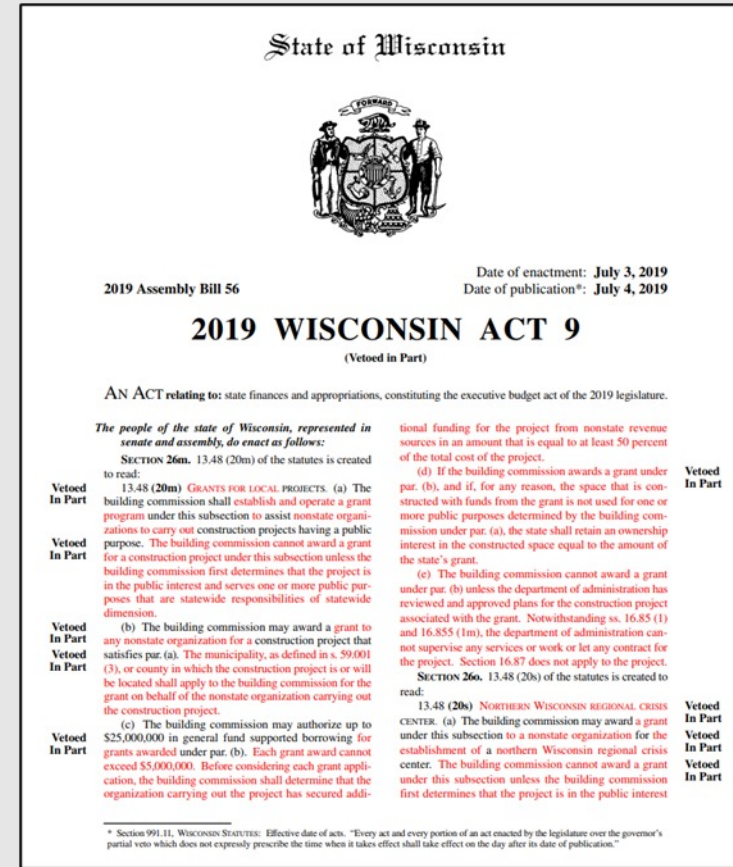
10 Year Average 2012 – 2022

3.0 Million



Historic Investments

- Over a half billion in new ongoing revenue
- Reduced bonding
- \$187 million in federal redistribution funding



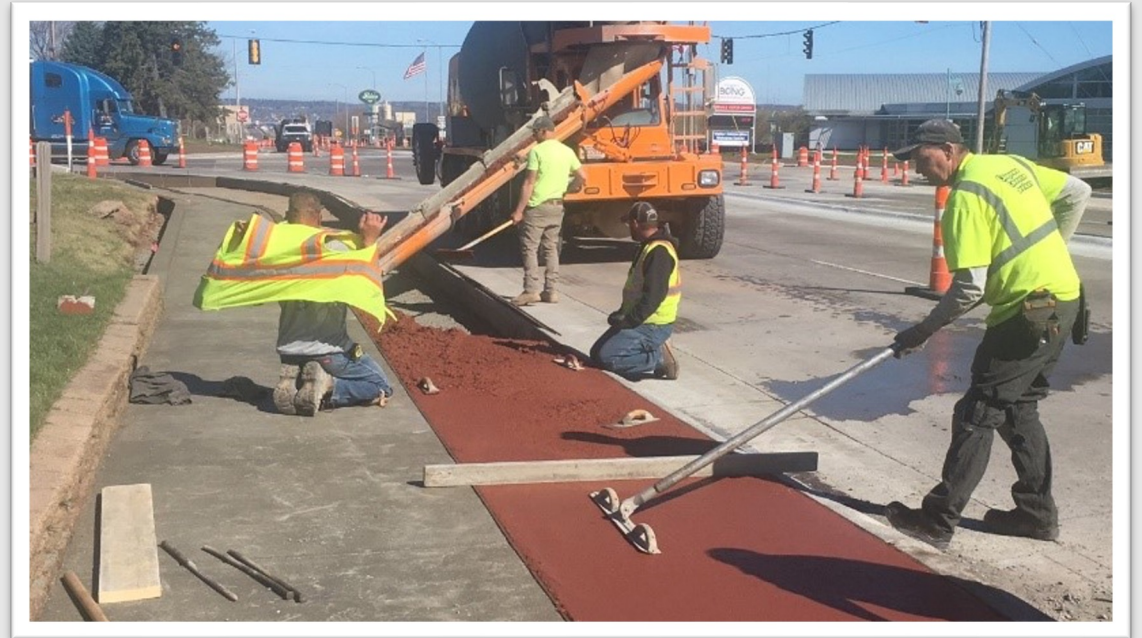
Bipartisan Infrastructure Law (BIL)

- \$1.1 billion in new funding for federal aid highway-apportioned programs over five years: increase of about 25%
- \$225 million for bridge replacement and repairs
- Transit, electric vehicles, rail, harbors, transportation safety



Stopping the Decline

- Improved more than 4,600 miles of highways and roads
 - Including more than 1,700 locally owned roads across the state.
- Nearly 1,500 bridges



Historic Investments

Local Road and Bridge Programs

- Projected spending on local projects, FY 2020 - 2026
 - \$1.65 billion
 - More than double



Progress on Megas and Majors

- Zoo Interchange North Leg
- I-39/90/94 Wisconsin River Bridges
- I-39/90/94 Madison – Wisconsin Dells
- I-41 Appleton – De Pere
- Blatnick Bridge
- US 51 Stoughton Road
- US 53, WIS 35, WIS 16 La Crosse
- WIS 23 Fond du Lac – Sheboygan
- WIS 15 New London – Fox Cities
- Madison Beltline Flex Lane



I-94 East-West Corridor





Thank You!

