



WAPA

WISCONSIN ASPHALT PAVEMENT ASSOCIATION

56TH ANNUAL

CONFERENCE & BUSINESS MEETING

DECEMBER 1-2, 2015

MARRIOTT WEST | MADISON, WISCONSIN

Conference Program

Thank you to our Conference Partners:



BP Asphalt USA



FLINT HILLS
RESOURCES®

CONFERENCE AGENDA

DAY 1

Tuesday, December 1

Registration from 8 a.m. to 5 p.m.

General Sessions

- 9:30 – 9:45 Welcome, Brandon Strand, WAPA Executive Director
Steve Kennedy, 2015 WAPA President
- 9:45– 10:00 Opening Comments, Joe Olson, WisDOT Division of Transportation
Development Administrator and Chief Engineer
- 10:00 – 10:45 Wisconsin DOT Update, Rebecca Burkel, WisDOT Statewide Bureaus
Deputy Administrator
- 10:45 – 11:30 Asphalt Bid/Mix Specification Updates, Barry Paye, WisDOT Chief
Materials Engineer
- 11:30 – Noon Transportation Funding and Legislative Update, Craig Thompson,
Transportation Development Association of Wisconsin
- Noon – 1:00 Lunch with Special Guest Tim Grover, CEO of Attack Athletics

Concurrent Breakout Sessions

	<i>Ballroom B & C</i>	<i>Ballroom G & H</i>	<i>Ballroom A</i>	<i>Ballroom F</i>	<i>Green Bay Room</i>
Session 1: 1:15 - 2:15	High Recycle Projects: Lessons Learned 2.0	Cold Weather Paving	Percent Within Limits (PWL): Quality Measure of Choice	Pavement Maintenance Best Practices	Exhibitors Presentations
Session 2: 2:30 - 3:30	High Recycle Projects: Lessons Learned 2.0	Cold Weather Paving	Combined Bid: Web-Based Simplified Design Tool	Ethics Training	Exhibitors Presentations
Session 3: 3:45- 4:45	Percent Within Limits (PWL): Quality Measure of Choice	Pavement Maintenance Best Practices	Combined Bid: Web-Based Simplified Design Tool	Ethics Training	Exhibitors Presentations

- 5:00 – 6:00 Cocktail Reception
- 6:00 – 7:00 Dinner
- 7:30 – close Hospitality Suite

CONFERENCE AGENDA

DAY 2

Wednesday, December 2

Registration from 8 a.m. to 10 a.m.

General Sessions

- 9:30 – 10:00 League of Wisconsin Municipalities Update, Jerry Deschane, LWM
Executive Director
- 10:00– 10:30 MnRoad Test Track Update, Ben Worel, MnROAD Operations Engineer
- 10:30 – 10:45 BREAK
- 10:45 – 11:15 National Asphalt Pavement Association's Sustainability Update, Heather Dylla,
NAPA Director of Sustainable Engineering
- 11:15 – 11:45 Wisconsin Highway Research Program Update, Lori Richter, WisDOT
Performance, Policy and Research Section Chief, and David Esse,
WisDOT Innovation Officer

WAPA Members Only

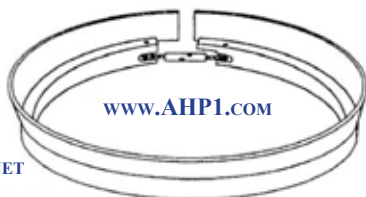
- 12:30 – 2:00 WAPA Board of Directors Annual Business Meeting (Middleton Room)



AMERICAN HIGHWAY PRODUCTS LTD. MANHOLE RISER SPECIALISTS

DAN PETERSON
SALES REPRESENTATIVE
CELL: 847-738-1604
FAX: 847-201-1495
ROUND LAKE, IL 60073
EMAIL: GETUMINC@COMCAST.NET

AMERICAN HIGHWAY PRODUCTS
TOLL:FREE: 888-272-2397
FAX: 330-874-3800

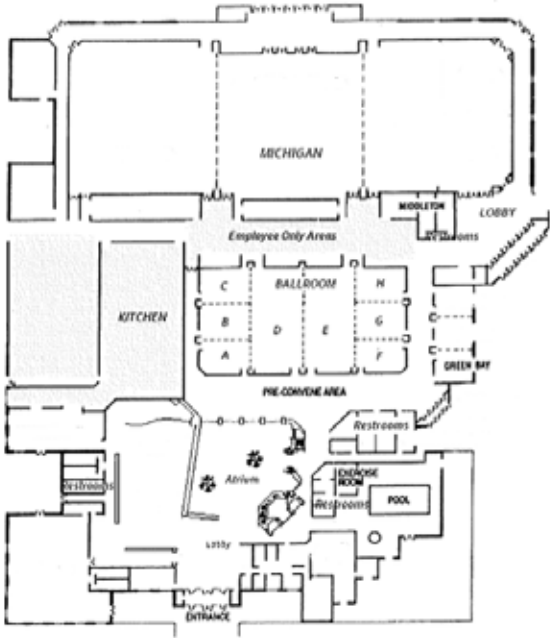


1723 STRASBURG BOLIVAR RD. N.W.
BOLIVAR, OHIO 44612

CONVENTION MAP

MADISON
Marriott.
WEST

1313 John Q. Hammons Dr.
Middleton, WI 53562
608-831-2000



- Registration _____ Pre-Convene Area
General Sessions _____ Ballrooms D & E
Exhibits and Breaks _____ Atrium
Technical Breakout Sessions _____ See Page 2
Lunch _____ Michigan Room
Reception _____ Michigan Room
Dinner _____ Michigan Room
Hospitality Suite _____ Room #226



GENERAL SESSION SPEAKER BIOGRAPHIES

Joe Olson

Joe Olson is the Administrator of the Division of Transportation System Development (DTSD) and Chief Engineer for the Wisconsin Department of Transportation (WisDOT). Joe began his career with WisDOT back in 1989 and most recently served as the acting administrator and deputy administrator-regions. Joe previously spent 16 years as director of Southwest Region. The first 10 years of Joe's career included time as a Design/Construction engineer in the Wisconsin Rapids office and as a member of the Highway 29 Project Management Team. Joe is a graduate of UW-Madison, with a degree in Civil and Environmental Engineering. He is a registered Professional Engineer in Wisconsin.

Rebecca Burkel

Rebecca Burkel is the Statewide Bureaus Deputy Administrator for WisDOT. Rebecca began her career at WisDot in 1993. After graduating from UW-Green Bay with a MS in Environmental Science and a BS in Chemistry, she worked as an Environmental Coordinator in Green Bay for seven years. She advanced to the Technical Services Chief position in Eau Claire, where she served for six years. In 2006, Rebecca was appointed the Operations Director of Northcentral Region for Wisconsin Rapids and Rhinelander. In

2011, Rebecca became the Director of the Bureau of Technical Services, a position she held until her appointment as Deputy Administrator.

Barry Paye

Barry Paye has worked with WisDOT since 2006. He is currently the Chief Materials Engineer in the Bureau of Technical Services. He has served as the WisDOT Central Office Material's Lab Supervisor, and also has served in several roles in the Northeast Region. He has served as a research committee chair for the Wisconsin Highway Research Program, and as the chair of the HMA Technical Team. Prior to working for WisDOT, Barry worked for the Minnesota DOT for over 4 years, working on their first major design build project. Barry has his BS and MS in Civil Engineering from UW-Madison, specializing in construction management and HMA research. He is a licensed Professional Engineer in Minnesota and Wisconsin.

Craig Thompson

Craig Thompson is the Executive Director of the Transportation Development Association (TDA) of Wisconsin. Prior to joining TDA, Thompson worked for the Wisconsin Counties Association (WCA) for more than sixteen years. Most recently, he

GENERAL SESSION SPEAKER BIOGRAPHIES

was legislative director for the association with responsibility for the overall legislative program at both the state and federal levels. Thompson also served as one of the association's primary media contacts. In his capacity as legislative director of WCA, Thompson was appointed by Governors Tommy Thompson, Scott McCallum, and Jim Doyle to serve on numerous statewide boards and commissions. As TDA's Executive Director, Thompson serves as primary spokesperson, educating the public and policy makers about the needs and challenges facing Wisconsin's transportation system. Thompson, a native of Wisconsin – born and raised in Racine – is a graduate of the University of Wisconsin-Madison.

Jerry Deschane

Jerry Deschane is the Executive Director of the League of Wisconsin Municipalities. He started working for the League last year after a 20-year career in lobbying and association management. He's been on school boards for over sixteen years and has also worked as an association management consultant and author.

Jerry is just the fifth executive director in the league's 117-year history. Under his leadership, the League is working toward a new level of engagement with its members; including building up the League's lobbying

strengths with the Wisconsin Legislature.

During his first year of leadership, Jerry has crisscrossed Wisconsin numerous times, meeting over 500 local elected and professional officials.

Jerry is a native of Wisconsin and a Certified Association Executive and graduate of the Institute for Organization Management. His background and education are in radio news broadcasting.

Ben Worel

Mr. Worel received his Bachelor of Science degree in Civil Engineering (University of Minnesota, 1989) and his Professional license from the State of Minnesota in 1995. His work experience is primarily in the area of pavement research and pavement management. At Braun Intertec (1989-1996) he worked on the Strategic Highway Research Program (SHRP) and the Long Term Pavement Performance project (LTPP). His duties included the development of the LTPP database, coordination of data collection, and day-to-day operations for the North Central Region, which included 13 states and 2 provinces. Currently, Mr. Worel works for the Minnesota Department of Transportation (MnDOT) (1996-Present) as the MnROAD Operations Engineer. His major activities include the coordination of day-to-day activities for the MnROAD site, overseeing

GENERAL SESSION SPEAKER BIOGRAPHIES

the data collection, MnROAD database, data requests, and assisting in the 18 month leadership exchange (2009-2011) with MnDOT Research Services where he worked with the development and administration of pooled funds and helping with TRB's AFD40 Committee (Full Scale Accelerated Pavement Testing), active member of a FHWA LTPP Expert Task Group and ASCE Transportation and Infrastructure Committee, and as the lead and participant in many national pooled fund efforts both lead by MnDOT and by other states.

Heather Dylla

Dr. Heather Dylla is Director of Sustainable Engineering for the National Asphalt Pavement Association where she manages programs that assist producers, contractors, and designers in improving the sustainability of pavement construction. She currently serves on the Federal Highway Administration's Sustainable Pavement Technical Working Group, is a Technical Advisor for several research projects, and manages industry-funded projects that aim to quantify and improve the sustainability of asphalt pavements. She is also leading an industry effort to craft Environmental Product Declarations for asphalt pavements. Heather obtained her doctorate from the Louisiana State University.

Lori Richter

Lori Richter is Chief of the Performance, Policy and Research Section within the WisDOT's Office of Policy, Finance and Improvement. She serves as the Performance Measure Manager and Lean Government Agency Lead of the department, and administers the department's SPR2-funded research program.

Lori is a Chair of the Wisconsin Research Program (WHRP) Steering Committee, as well as a member of the Governor's Lean Initiative Steering Team, and serves on several national committees within the American Association of State Highway and Transportation Officials (AASHTO) and the Transportation Research Board (TRB). Lori was recently awarded her Lean Six Sigma Black Belt Certification.

Lori attended the University of Wisconsin-Madison for both undergraduate and graduate school, receiving her Bachelor of Science from the School of Education and Master of Public Affairs from the LaFollette School of Public Affairs in public administration and policy analysis.

David Esse

David Esse is the Innovation, Technology & Research Officer for DTSD at WisDOT. Mr. Esse holds a BBA in Marketing from UW-Whitewater and a BS in Mechanical

GENERAL SESSION SPEAKER BIOGRAPHIES

Engineering from UW-Madison and brings with him 15 years of business insight and nine years of technical engineering practice. Prior to joining the State, David worked in the private sector as a marketing consultant and business development specialist. As a mechanical engineer with MGA Research Corporation in Burlington, WI, David was the HYG Accelerator Sled Facility Manager overseeing crash simulation testing to develop/certify occupant protection systems

for automotive, aerospace, racing and military applications.

David’s key role as Innovation Officer is to facilitate the rapid piloting and adoption of engineering best practices that have been established by the transportation industry and other State DOTs. These innovations come in a variety of forms including policy updates, procedural changes, materials and emerging technology.



The Asphalt Authority

TECHNICAL BREAKOUT SESSION SUMMARIES

High Recycle Projects: Lessons Learned 2.0 (1 PDH)

Barry Paye, Wisconsin DOT and Industry

This session will provide an overview of the high recycle pilot projects that were constructed in 2014 and 2015. There will be discussions relating to the specifications, test result comparison data, constructibility concerns, lessons learned up to this point to impact future projects, and more.

Cold Weather Paving (1 PDH)

Don Greuel, Wisconsin DOT and Perry Atterholt, Mathy Construction

Cold weather paving in Wisconsin continues to be a balance between industry, owner, and user to ensure good pavement performance and economics. In 2015, WisDOT overhauled their standards and issued a new cold weather paving specification, design, and guidance documents. This session will help you better understand the expectations and implementations of those new requirements.

Percent Within Limits (PWL): Quality Measure of Choice (1 PDH)

Dan Kopacz, Wisconsin DOT

This session will outline the implementation of PWL specifications as an improved method for assessing quality over our current system. The session will provide an overview of Wisconsin's PWL pilot specification development.

Pavement Maintenance Best Practices (1 PDH)

Tom Wood, TJ Wood LLC

Pavement maintenance and preservation has never been more important due to budget constraints requiring that state and local agencies perform more work with less money. All types of maintenance are needed in a comprehensive pavement maintenance program and this session will provide a summary.

TECHNICAL BREAKOUT SESSION SUMMARIES

Combined Bid: Web-Based Simplified Design Tool (1PDH)

Deb Schwerman, WAPA

Beginning in 2016, WisDOT will require that asphalt mix and PG binder prices be combined into one bid item. This session will provide an overview of the free, web-based simplified design tool from WAPA to help prepare you for these changes by familiarizing you with the updated nomenclature and providing examples of how to formulate your bids under this new method.

Ethics Training (1 PDH)

Angela James and Leah Ziemba, Michael Best & Friedrich LLP

Back by popular demand, this session will focus on the fundamental canons of professional conduct and other appropriate administrative rules or regulations. The discussion is designed to demonstrate a working knowledge of professional ethics and satisfy the requirement for “professional conduct and ethics.”



Ken Mayo

C: 423.322.8343 kmayo@astecinc.com



Need Equipment? Choose Roland

Reliable Equipment • Responsive Service
24-Hour On-site Emergency Service Available



Call The Location Nearest You!

De Forest 608-842-4151	East Claire 715-874-5400	Schofield 715-355-9898
De Pere 920-532-0165	Frankville 262-835-2710	



15 locations throughout WI, IL, IN, MI, and MO

2015 ENVIRONMENTAL LEADERSHIP AWARDS

Renewal Awards—Permanent Plants

American Asphalt of Wisconsin Plant 22 (Mosinee)
American Asphalt of Wisconsin Plant 83 (Arnott)
D.L. Gasser Construction Company Plant 65 (Baraboo)
Monarch Paving Company Plant 5 (Amery)
Monarch Paving Company Plant 14 (New Richmond)
Monarch Paving Company Plant 46 (Hager City)
Northeast Asphalt Control 55 (Burnett)
Northeast Asphalt Control 56 (Ripon)
Northeast Asphalt Control 63 (Larsen)
Northeast Asphalt Control 64 (Menasha)
Northeast Asphalt Control 65 (Green Bay)
Payne & Dolan Control 1 (Sussex)
Payne & Dolan Control 2 (Waukesha)
Payne & Dolan Control 7 (Franklin)
Payne & Dolan Control 8 (Cedar Lake)
Payne & Dolan Control 12 (Muskego)
Payne & Dolan Control 23 (Paris)
Payne & Dolan Control 31 (Racine)

Renewal Awards—Portable Plants

American Asphalt of Wisconsin Plant 54 (Iron River)
American Asphalt of Wisconsin Plant 76 (Bloomville)
D.L. Gasser Construction Company Plant 15 (Wisconsin Dells)
Mathy Construction Company Plant 23 (Barnes)
Monarch Paving Company Plant 75 (Spooner)

Congratulations to all recipients!





PERFORMANCE You Can Count On



Operating since 1944, Miller-Bradford & Risberg is a family business dedicated to excellence for all your equipment needs.

www.miller-bradford.com

Wisconsin

Sussex 800-242-3115
Madison 800-585-7219
Eau Claire 800-585-7232

De Pere 800-638-7448
Abbotsford 888-886-4410

Illinois

Rockford 800-585-7231

Michigan

Negaunee 800-562-9770



UHMW Liners for Dump Trucks,
Dump Trailers & Hoppers

800-772-6146

www.superslide.com sales@superslide.com

EXHIBITS

The Exhibit Area is open from 8:00 a.m. to 6:00 p.m. on Tuesday and from 8:00 a.m. to 12:00 p.m. on Wednesday. Events taking place near the Exhibit Area are:

Tuesday, December 1

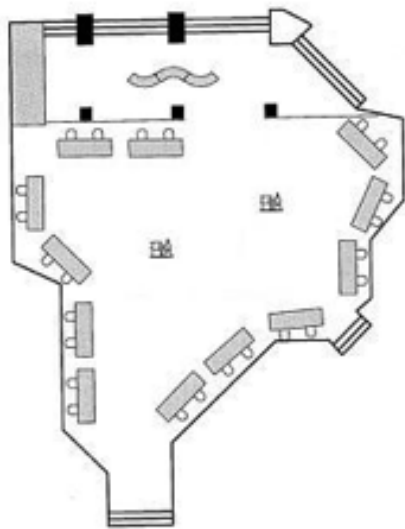
8:30 a.m. – 11:45 a.m. _____ Coffee Station

1:15 p.m. – 4:45 p.m. _____ Coffee Station

Wednesday, December 2

8:00 a.m. – 11:30 a.m. _____ Coffee Station

10:30 a.m. – 10:45 a.m. _____ Refreshment Break



HOW DID WE DO?

Soon after the conference, WAPA will send out a short online survey to all attendees.

Please take a moment to share your thoughts.

What did you find valuable at the conference? What aspects could be improved?

Your input will help us make the WAPA conference even better next time.

Thanks!

THANK YOU TO OUR SPONSORS!

Conference Partners

BP Asphalt
Flint Hills Resources

Gold Level Sponsors

Astec Industries
CWMF Corporation
Roland Machinery

Silver Level Sponsors

AkzoNobel Surface Chemistry
Antigo Construction

Bronze Level Sponsors

Fabick Cat
Henry G. Meigs

Coffee Break

Behnke Materials Engineering

Cocktail Reception

Astec Industries

Hospitality Suite

Miller-Bradford & Risberg

Exhibiting Sponsors

American Highway Products
Astec Industries
CWMF Corporation
Fabick Cat
Horn Plastics Inc.
Miller-Bradford & Risberg
Pine Instruments
Road Science, Division of ArrMaz
Roland Machinery
Testquip LLC
Tube City IMS
Zydex Inc.

PRINTED PROGRAM SPONSORED BY:

Asphalt
Best Practices in Paving,
Preservation and Plant Operations
Contractor™

WAPA MEMBERS

WAPA Producer Members

American Asphalt of Wisconsin
D.L. Gasser Construction Company
Iverson Construction
Mathy Construction Co.
Monarch Paving Company
Murphy Construction Co.
Northeast Asphalt, Inc.
Northwoods Paving
Payne & Dolan, Inc.
Pitlik & Wick, Inc.
Rock Road Companies, Inc.
Senn Blacktop, Inc.
Sherwin Industries, Inc.
Stark Pavement Corp
Tri-County Paving, Inc.
Wolf Paving

WAPA Liquid Asphalt Supplier Members

BP Asphalt
Flint Hills Resources
Henry G. Meigs, LLC

WAPA Associate Members

Akzo Nobel Surface Chemistry
Antigo Construction, Inc.
Aon Risk Services
Aring Equipment Company
Asphalt Reheat Systems
Asphalt Technologies Group
Astec Industries, Inc.
Baxter & Woodman, Inc.
Becher-Hoppe Associates Inc.
Behnke Materials Engineering
Benchmark, Inc.
Bloom Companies
Carbolite, Inc.

Century Fence Company
CGC, Inc.
Chicago Testing Laboratory Inc.
Cicchini Asphalt, LLC
CWMF Corporation
Dillman
Elsey Construction Products
Engineered Additives
Fabick Cat Equipment Company
Fahrner Asphalt Sealers, LLC
GKW, LLC
GRAEF
Heatec, Inc
Horn Plastics Inc.
Inspec, Inc
James Peterson Sons, Inc.
Kwik Trip
Lafarge North America Inc.
Meigs Trucking, Inc.
Milestone Materials
Miller-Bradford & Risberg
Motion Engineering, Inc.
MSA Professional Services, Inc.
Northwind RAS
OMNNI Associates, Inc.
Pavement Consulting LLC (PCI)
Positioning Solutions Company
Professional Testing Service
RC Pavers
Roadtec Inc.
Roland Machinery Inc.
Ruekert & Mielke
Specialty Engineering Group (SEG)
Stansteel
Troxler Electronic Laboratories Inc.
W.K. Construction, Inc
WEM Automation
Yahara Materials, Inc.

Contact WAPA

Remember, when looking for services or supplies, please consider a WAPA member. If you know a company who should be a member, please be sure to contact us.

Wisconsin Asphalt Pavement Association
4600 American Parkway, Suite 201
Madison, Wisconsin 53718
(608) 255-3114

We greatly appreciate your membership and support of the Wisconsin Asphalt Pavement Association.

